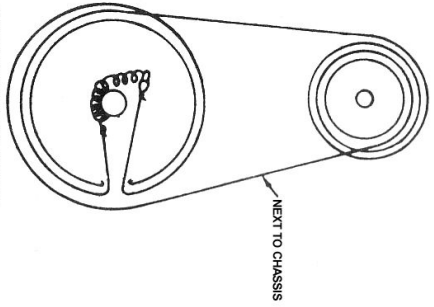
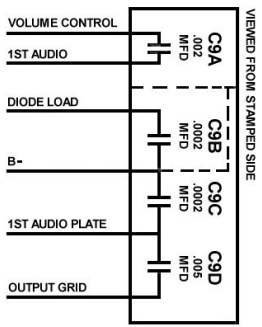


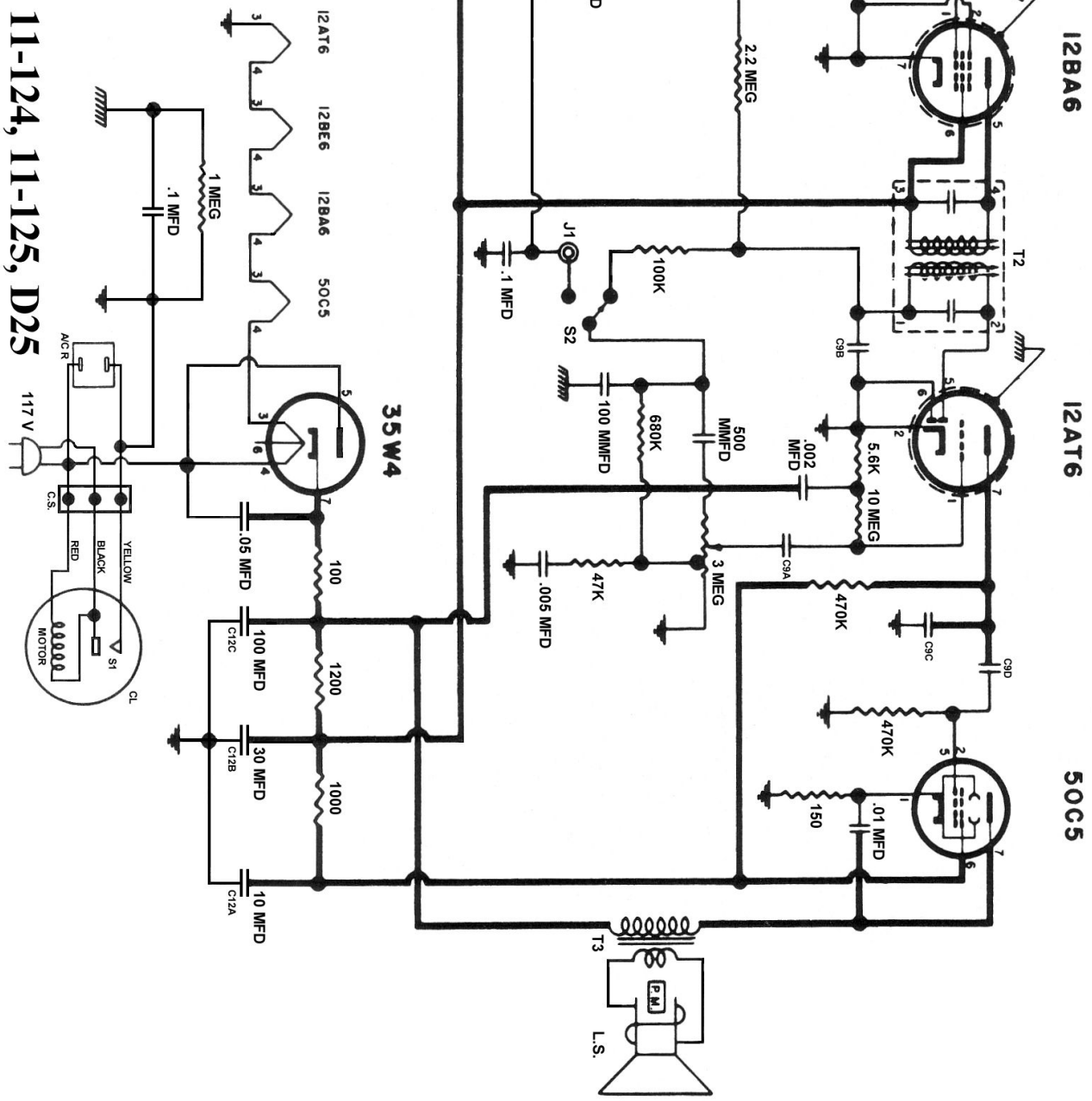
NOTES
 1. NUMBER ONE TERMINAL ON I.F. TRANSFORMERS COILED WITH GREEN DOT, NUMBERING PROCEEDS CLOCKWISE.
 2. I.F. 455 KC.

1. DENOTES COMMON WIRING
 2. DENOTES CHASSIS



PLACEMENT OF DIAL DRIVE TUNING CONDENSER IN CLOSED POSITION

Crosley 11-120, 11-121, 11-122, 11-123, 11-124, 11-125, D25



Crosley 11-120, 11-121, 11-122, 11-123, 11-124, 11-125, D25

ALIGNMENT PROCEDURE

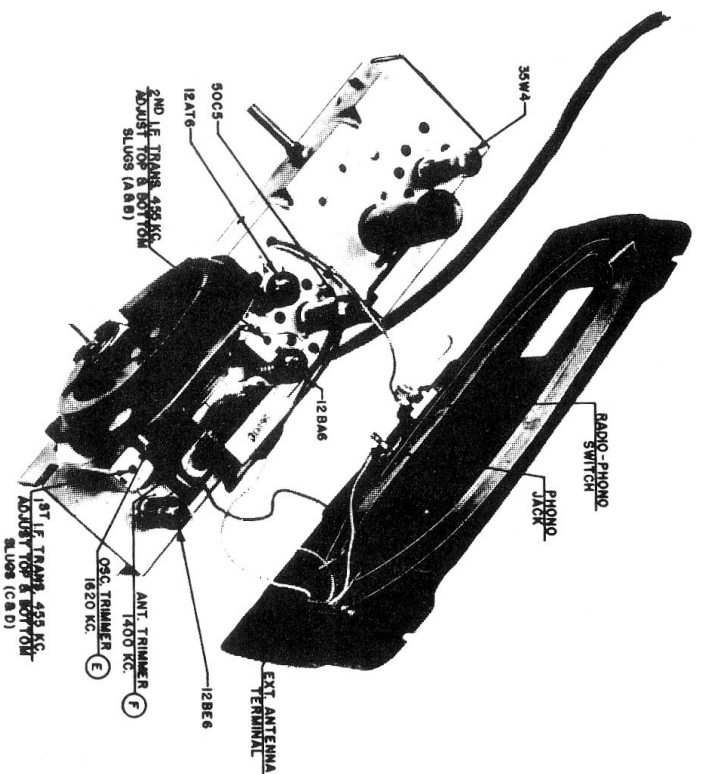
1. To remove the chassis from the cabinet, proceed as follows:
 - a. Turn the tuning control completely counter-clockwise to close the gang.
 - b. Remove the volume and tuning control knobs, and the dial pointer.
 - c. Remove the cabinet back and loosen the screw on the terminal cover behind the electrolytic capacitor. Lift up the cover and disconnect the three leads to the clock.
 - d. Connect a jumper between the terminal coded yellow and the center terminal on the terminal board.
 - e. Remove the two screws in the top corners of the chassis apron that secure the chassis to the cabinet.
 - f. Loosen the slotted hex head screw on the right rear of the chassis and slide the screw toward the center of the chassis to release power receptacle from opening in side of cabinet.
 - g. Slide the chassis from the cabinet.
2. Connect an output meter across the speaker voice coil.
3. The r.f. signal input from the signal generator should be connected as indicated in the alignment chart. Connect the signal generator ground to the top lug on loop antenna back (See Chassis Top View).
4. Turn the volume control on full and adjust the signal generator output to produce approximately midscale deflection of the output meter, but maintain signal generator output as low as possible to prevent AVC action in the receiver.

ALIGNMENT CHART

Alignment Sequence	Signal Generator Output		Position of Dial Pointer	Adjust for Maximum Output
	Frequency in KC	In Series with		
1	455	200 mmi. External Ant. Screw	1620	A, B, C & D (See Note 1.)
2	1620	200 mmi. External Ant. Screw	1620	E
3	1400	200 mmi. External Ant. Screw	1400	F (See Note 2.)

ALIGNMENT NOTES

1. Repeat adjustments (A, B, C & D) in sequence, until maximum output is obtained.
2. After the chassis and loop antenna have been replaced in the cabinet, repeat alignment sequence "3". Adjust "F" by inserting screw driver through the hole provided in the bottom of the cabinet.



SOCKET VOLTAGE CHART

